

Description:

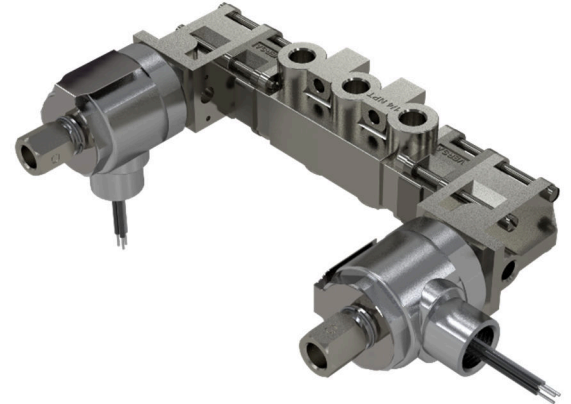
The VERSA VXX-4323-316-SC0524 is a 24 VDC dual solenoid valve specifically used in tandem with VRG Controls RCVC Red Circle Valve Controller for double-acting control valve positioning functions. The valve assembly seamlessly integrates with the RCVC for all double-acting applications. It may be used for new installations or retrofit to replace previous versions of “double acting” solenoid valve assemblies used with the RCVC Red Circle Valve Controller. The VERSA “4323” is manufactured of 316L Stainless Steel and can accommodate supply gas pressure up to 300 psig.

Common Applications:

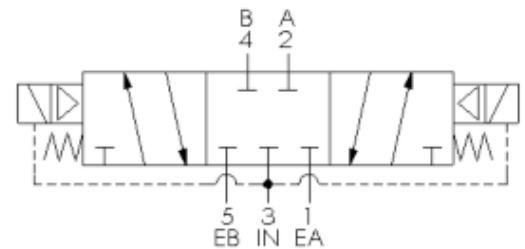
- RCVC Red Circle Valve Controller – Double Acting Applications
- Replace Previously used AAA SY4X and AAA SY4XZ Assemblies
- VRG Sales Code “RCVCSOLDAVERSA”

Features:

- 316 Stainless Steel Construction Trim and Body
- Compact Size with Convenient Port Configuration
- Can Accept Backpressure to Eliminate Atmospheric Emissions
- 0.250 NPT Inlet and Outlet Standard
- Repeatable, Bubble Tight Seating and Re-seating Soft Seat Design
- Superior Capacities Via Large Nozzles
- Captive Venting (Threaded Exhaust Port)
- ZERO Emissions at Steady State
- Low Temperature Rating to -40F (-40C)


Figure 1 – Versa VXX-4323 Series Solenoid Valve
Specifications:

Model:	VERSA VXX-4323-316-SC0524
VRG Part No.	BA-7315
Description:	Directional Control Valve, Dual Solenoid
Operating Voltage:	24 VDC
Port Sizes:	0.250 in FNPT
Flow Coefficient (Cv):	1.8 Cv
Solenoid Connections:	0.500 FNPT
Power (Nominal):	9.5 W
Inrush (Current):	381 mA
Holding (Current):	381 mA
Coil Resistance:	63 Ω
Duty:	Continuous Duty
Max Supply Pressure:	300 psig
Temperature Range:	-40 F to +104 F (-40 C to +40 C)
Overall Dimensions:	4.3 in X 5.1 in X 5.6 in 102 mm X 130 mm X 142 mm
Weight:	6.0 Lbs (2.75 kg)
Body:	316L Stainless Steel
Solenoid Housing:	Plated Steel
Seals:	Low Temp Buna
Coil:	Epoxy Molded
Operating Media:	Natural Gas, Air, Inert Gases
Protection:	CI I, Grps C,D - CI II, Grps E,F,G - CI I, Div 2, Grps A,B,C,D - CI II, Div 2, Grps E,F,G


Figure 2 – Versa VXX-4323 Schematic Symbol